

Overview and Scrutiny



Children and Young People Select Committee Supplementary Agenda

Thursday, 21 January 2021

7.00 pm,

Virtual Meeting via MS Teams

For more information contact: Emma Aye-Kumi emma.aye-kumi@lewisham.gov.uk

This meeting is an open meeting and all items on the agenda may be audio recorded and/or filmed.

Part 1

Item		Pages
6.	SEND transition from children's to adults' services To follow.	3 - 22

This page is intentionally left blank



Children and Young People Select Committee

Reasons for lateness and urgency

This report has not been available for five clear days before the meeting. Publication was delayed due to the prioritisation of the ongoing COVID response and the ever changing guidance in particular in relation to education settings and lockdown.

The report has been requested by the committee and therefore we ask that it is presented at the meeting scheduled.

Special Educational Needs and Disability (SEND) – Update on Transitions

Date: 21st January 2021

Key decision: No.

Class: Part 1.

Ward(s) affected: All

Contributors: Angela Scattergood, Director of Education

Outline and recommendations

This report provides the Children and Young People (CYP) Select Committee with an update on services for children with special educational needs and/or disabilities (SEND). CYP Select is recommended to:

- *Note the updates on SEND transitions*
- *Review and comment on the proposed direction of travel*

1. Summary

- 1.1 This report updates members on SEND provision three years on from the local area inspection which was undertaken by Ofsted in October 2017. It focusses in particular on work associated with how young people are supported into adulthood.

2. Recommendations

- 2.1. The Committee are asked to note the recently developed SEND Strategy 2020-2023, which is included as an appendix.

3. The Local Area SEND Partnership Strategy 2020-2023

- 3.1. The Local Area SEND Partnership Strategy (0–25 years), 2020–2023, builds on the work that we have already achieved in the SEND Partnership Strategy 2016-2019 and takes into account the ‘next steps’ from the Local Area Inspection in October 2017. The strategy sets out our shared partnership vision, priorities and commitments for the next three years and will play a vital part in developing services to improve life outcomes for children and young people, and their journey into independence and adulthood (0–25 years).
- 3.2. The implementation of the strategy is monitored quarterly and overseen by the SEND Partnership Programme Board which is chaired by an Executive Head Teacher and has representatives from senior leaders across health, social care, education and the voluntary sector including parent(s)/carer(s) groups.
- 3.3. Our partnership SEND strategy is the product of extensive consultation and collaboration with the local area partnership which includes children and young people with SEND and their parent(s)/carer(s), as well as partners working with our families. These contributions have been important in developing the strategy, in particular drawing from the personal experiences of parent(s)/carer(s) and making the most effective use of our shared knowledge, experience and expertise.
- 3.4. In October 2020, there were 2,873 Lewisham residents (or young people who are looked after to Lewisham but residing elsewhere) with an EHC Plan, representing a 27% increase compared October 2018 (2,261). Of these, 15.5% (447) were accessing further education or specialist post 16 provisions (up from 13% or 291 in 2018).
- 3.5. Outlined below are some of the Local Area’s key achievements over the last year which relate in particular to transitions:
- Targeted support has been allocated to all settings (0-25), which has included reviewing the quality of provisions, the implementation of action plans and providing a range of training sessions on SEND.
 - All partners understand Lewisham’s expectations for SEND provision and are confident in challenging non-inclusive practice.
 - A transition team has been established in response to the need for smoother transitions for young people with SEND.
 - There has been an increase in the number of children and young people completing the independent travel training programme.
 - The SEND team is focussing on preparation for adulthood from Year 9 with specific objectives relevant to the young person’s needs.

Is this report easy to understand?

Please give us feedback so we can improve.

Go to <https://lewisham.gov.uk/contact-us/send-us-feedback-on-our-reports>

4. Short Breaks Services continuing post 18

- 4.1 The previous Local Area Inspection noted that the short breaks service offers a wide range of services for children and young people up to the age of 18, however, these taper off as they become older. This is especially the case for activities that encourage young people aged 18 to 25 to take part in social events. Parent(s)/carer(s), too, feel that there are fewer activities to access once young people reach adulthood.
- 4.2 The Short Breaks Service are currently reviewing the provisions for 16-25 years old to better understand who is accessing these and how often etc. and have consulted with young people and their parent(s)/carer(s) to understand what they need.
- 4.3 The response from young people is that they want to do what their peers are doing – shopping, gym, bowling, cinema, on-line gaming and socialising on and off-line. Where they attend clubs, they would like to continue to do so, post 18.
- 4.4 In response to this the service is developing a menu of opportunities which would increase the opportunities for 16-25 year olds, subject of course to funding. In parallel with this we are seeking to transform the day opportunities for young adults in order to support pathways towards employment and/or bridge building into the community.
- 4.5 Following the recent review of youth services there is also an opportunity to explore how young people with SEND may be able to better access more mainstream youth activities.

5 Preparing for Adulthood

- 5.1 The 2017 Local Area Inspection recognised the proportion of young people not in education, employment or training (NEET) is higher for those who have SEN and/or disabilities than for others.
- 5.2 The current picture for the Lewisham is that in the previous academic year:
- Total cohort of 16-18 year olds: 6192
 - Total no of NEET 16-18 year olds: 336
 - Total no of NEET SEND 16-18 year olds: 68 (year change: $\wedge+0.5\%$ (+33). 1.1% of total cohort).
- 5.3 In response to the Local Area Inspection, the following work has taken place:
- Development of two new work based training programmes for Lewisham residents with SEND (1x Supported Internship and 1x Supported Employment Programme).
 - A monthly education, training and employment bulletin emailed to all appropriate community stakeholders and included on the Local Offer.
 - Development of two to three new pilot work experience days to be delivered by HSBC in partnership with Christ The King Sixth Forms (CTKSF), Lewisham Schools with Resources Bases and Lewisham Parent Carer Forum (PCF)/Signal.
 - Started an Invitation to Tender (ITT) bid for a new Supported Employment project funded through the Department for Work and Pensions (DWP). Adult Social Care (ASC) have agreed to match funding. Currently on hold as advised by the DWP due to COVID19.

Is this report easy to understand?

Please give us feedback so we can improve.

Go to <https://lewisham.gov.uk/contact-us/send-us-feedback-on-our-reports>

- Development of a new supported apprenticeship (as advised by the host business Phoenix Community Housing (PCH)). Recruitment currently on hold due to COVID-19 building closure.
- Development of a potential new Supported Internship at Lewisham Homes identified. Currently on hold due to COVID-19 with a view to launching in Sept 2021 or 2022.

5.4 The next steps in the strategy are as follows:

- Implement relevant key priorities as identified in the new Transition and Preparing for Adulthood (PfA) Strategy including:
- Improve transition planning including training for schools and Social Worker on person centred planning (PCP) and vocational profiling (VP).
- Develop employment outcome focus with Voluntary Action Lewisham (VAL), special schools, local colleges and day service providers and ensure the referral process into volunteering opportunities is robust and the employment outcomes clear.
- Explore the development of a new Supported Employment or Job Coaching Service.
- Explore the development of Lewisham LA and NHS Trust setting up new Supported Internships and Supported Apprenticeships.
- Develop a mechanism for collecting data on training and employment pathway and outcomes.

6 **Travel Assistance and Independent Travel Training**

6.1 The current data for transport in Lewisham is that as of November 2020 travel assistance was provided to 864 young people (80 more than October 2019). This was across 146 different schools and colleges. Currently there are 25 young people on the waiting list to be trained, a further 22 have been assessed and marked for a review at a later date and 71 young people are waiting to be assessed for consideration of whether they should receive the training.

7 **Financial Implications**

7.1 Due to the increase in children and young people (CYP) that are in receipt of an Education, Health and Care (EHC) Plan this has put financial strain on to the high needs funding block. To mitigate some of the over spend a mitigation plan has been devised as part of a High Needs Block Officer Group, which has been shared with School's Forum. This is a two year plan which aims to cut costs across a number of areas but with a specific focus on placing students within Lewisham where possible by expanding the availability of specialist provision within the borough.

8. **Legal Implications**

8.1 There are no specific crime and disorder implications arising from this report.

9. **Crime and Disorder Implications**

9.1 There are no specific crime and disorder implications arising from this report.

10. **Equalities Implications**

10.1 Provision and support for children with disabilities and special educational needs and their families is a fundamental equalities issue. The SEND Strategy has been subject to an equalities impact assessment and that assessment will be updated this year.

Is this report easy to understand?

Please give us feedback so we can improve.

Go to <https://lewisham.gov.uk/contact-us/send-us-feedback-on-our-reports>

11. Environmental Implications

11.1 There are no specific environmental implications arising from this report.

12. Appendices:

a. Lewisham's Local Area Partnership SEND Strategy summary 2020-2023

Is this report easy to understand?

Please give us feedback so we can improve.

Go to <https://lewisham.gov.uk/contact-us/send-us-feedback-on-our-reports>

This page is intentionally left blank

Lewisham's local area partnership

Special educational needs and disability strategy (0–25 years)

2020–2023



It's everybody's business to be inclusive



Foreword

We are ambitious for all children and young people in Lewisham: we want them all to thrive and achieve to the best of their ability. That is why our children and young people plan 2019–2022 says that, ‘Together, with families, we will improve the lives and life chances of children and young people, so that they can lead happy, healthy and fulfilled lives’. For that to happen for children and young people with special educational needs and disabilities (SEND), we know that we need to make sure that, ‘Lewisham is an inclusive community that is welcoming of all and has the knowledge and skills to meet the needs of children and young people (0–25 years) with SEND, to enable them to play, learn, work and champion their aspirations.’

For that aim to be reality, we need to achieve three key priorities:

1. Children and young people with SEND (0–25 years) and their families having access to good universal services and support, to help children and young people and parents/ carers to be more resilient and independent within their local communities.

2. Where they are at risk of, or already experiencing difficulty with health, learning and social care, they get early help through targeted services and support, to meet their identified needs and prevent their needs from escalating and enable them to achieve their full potential.
3. Those who have high levels of complex needs who have been assessed by professional(s) as requiring specialist services and support across health, social care and education, receive the right support at the right time by the most appropriate person and/or service, so they can become as independent as possible.

To make these things happen, we need to recognise that ‘It’s everyone’s business to be inclusive’, to truly make a difference to our children and young people with SEND we need a whole-community approach. Accordingly, I am delighted to present Lewisham’s second local area partnership SEND strategy (0–25 years). The partnership includes the local council, health services, schools, colleges, early years settings and the voluntary and community sector. Together,

the partnership provides a range of services, support and provision to approximately 6,600 children and young people with special educational needs and disabilities across the London Borough of Lewisham. The strategy sets out our partnership commitments across education, health and social care over the next three years.

Councillor Chris Barnham

Cabinet Member for Children’s Services and School Performance

Our partnership vision

Lewisham is an inclusive community that is welcoming of all and has the knowledge and skills to meet the needs of children and young people (0–25 years) with special educational needs and / or disabilities, to enable them to play, learn, work and champion their aspirations.

Introduction

This is Lewisham's second local area partnership, (SEND) strategy (0–25 years), 2020–2023. Our local area partnership SEND strategy builds on the work that we have already achieved. It sets out our shared partnership vision, priorities and commitments for the next three years and will play a vital part in developing services to improve life outcomes for children and young people (0–25 years) with SEND and their families. It also aims to improve the experiences that children and young people and their families have when accessing and receiving services.

A child or young person has SEN if they have a learning difficulty or disability which calls for special educational provision to be made for them. A child or young person has a learning difficulty or disability if they:

- has a significantly greater difficulty in learning than the majority of others of the same age, or
- has a disability which prevents or hinders him or her from making use of facilities of a kind generally provided for others of the same age in mainstream schools or mainstream post-16 institutions.

Many children and young people who have SEN may have a disability under the Equality Act 2010 that is '... a physical or mental impairment which has a long-term and substantial adverse effect on their ability to carry out normal day-to-day activities'.

Children and young people with disabilities do not necessarily have SEN, but there is a significant overlap between disabled children and young people and those with SEN. Where a disabled child or young person requires special educational provision they will also be covered by the SEN definition. Therefore, for the purpose of this partnership SEND strategy, the term special education needs and disabilities (SEND) will be used rather than distinguishing between SEN and / or disabilities.



Our new local area partnership strategy 2020–2023

Extensive consultation and collaboration was undertaken to develop this partnership SEND strategy. Outlined below is a summary, for full details of the consultation and engagement, please refer to the local area consultation and engagement report that is available on the local offer alongside the partnership SEND strategy document.

A monthly SEND working group was established with identified key professionals from health, social care, education and the voluntary and community sector to work on the development of the new partnership SEND strategy. This working group has been fundamental in scoping, shaping and developing this strategy.

We have also engaged with the local area partnership through a number of consultation and engagement activities such as workshops, events, surveys, meetings, coffee mornings and tailored activities for children and young people with SEND appropriate to their communication needs.



Our local area partnership

The local area partnership includes a range of key stakeholders. Outlined below are the organisations that make up the local area partnership. Within these organisations there are a number of key services that support and meet the needs of children and young people with SEND. For a full list of the services, please refer to Appendix 1 within this partnership SEND strategy.

The local area partnership recognises and embraces diversity and actively works to reduce inequality and injustice for all groups



Our partnership key themes of focus

In addition, to the mapping need against the graduated response framework, we also scoped what we are currently doing and what we need to strengthen across a number of key areas of work, which are outlined below. This has enabled us to identify Lewisham's areas of strength and where further work is needed to improve these key areas of work

Early identification

Early identification is about recognising difficulties or issues at the earliest point and identifying what is needed.

Meeting need

Meeting need is about providing the right support at the right time by the most appropriate person/ professional and/or service to meet the identified need.

Improving outcomes

Improving outcomes is about being able to measure the impact or the effect of the support and / or services that have been put in place to meet need and whether it has improved outcomes for children and young people with SEND.

Communication and engagement (including training)

Communication and engagement is essential for effective functioning of services and the partnership

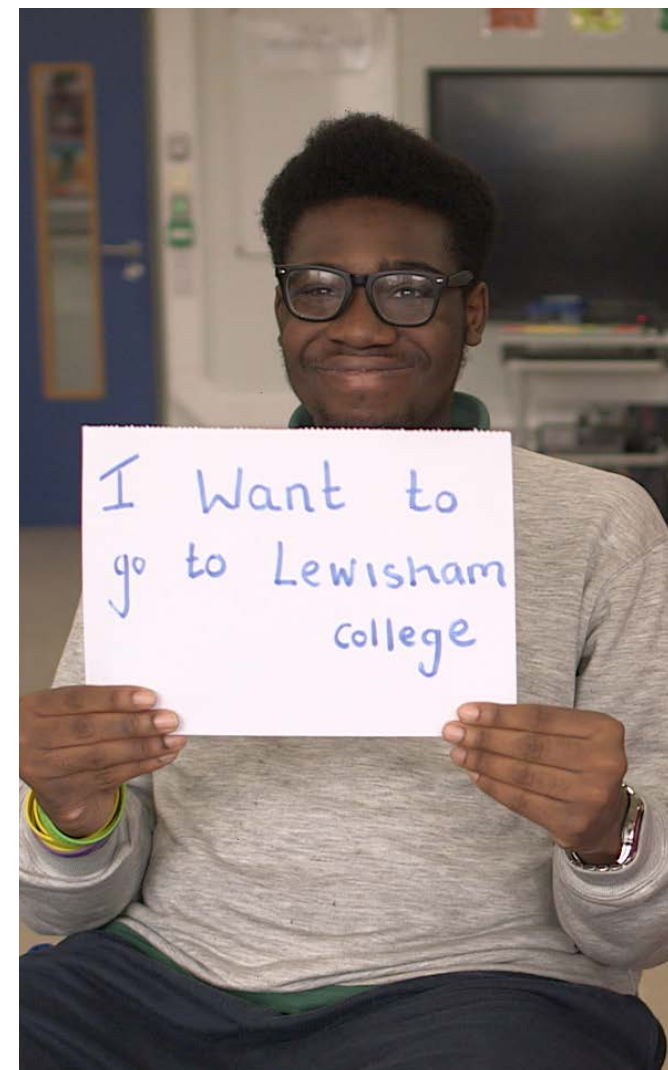
to provide high quality services. It also enables children and young people with SEND and their parents/ carers and professionals to be provided with information that can enable them to meet the needs of children and young people with SEND effectively.

Voice of the child and young person

The voice of children and young people with SEND must be at the very heart of services and we must listen to the views, wishes and feelings of children and young people when providing them with a service and/ or support and provide them with opportunities to participate of service development.

Multi-agency working

Multi-agency working leads to enhanced and improved outcomes and better services for children and young people with SEND. It also helps to reduce duplication and builds a more cohesive community.



Our partnership outcomes

The partnership has agreed a number of outcome areas that we are aiming to achieve over the next three years through our partnership commitments.

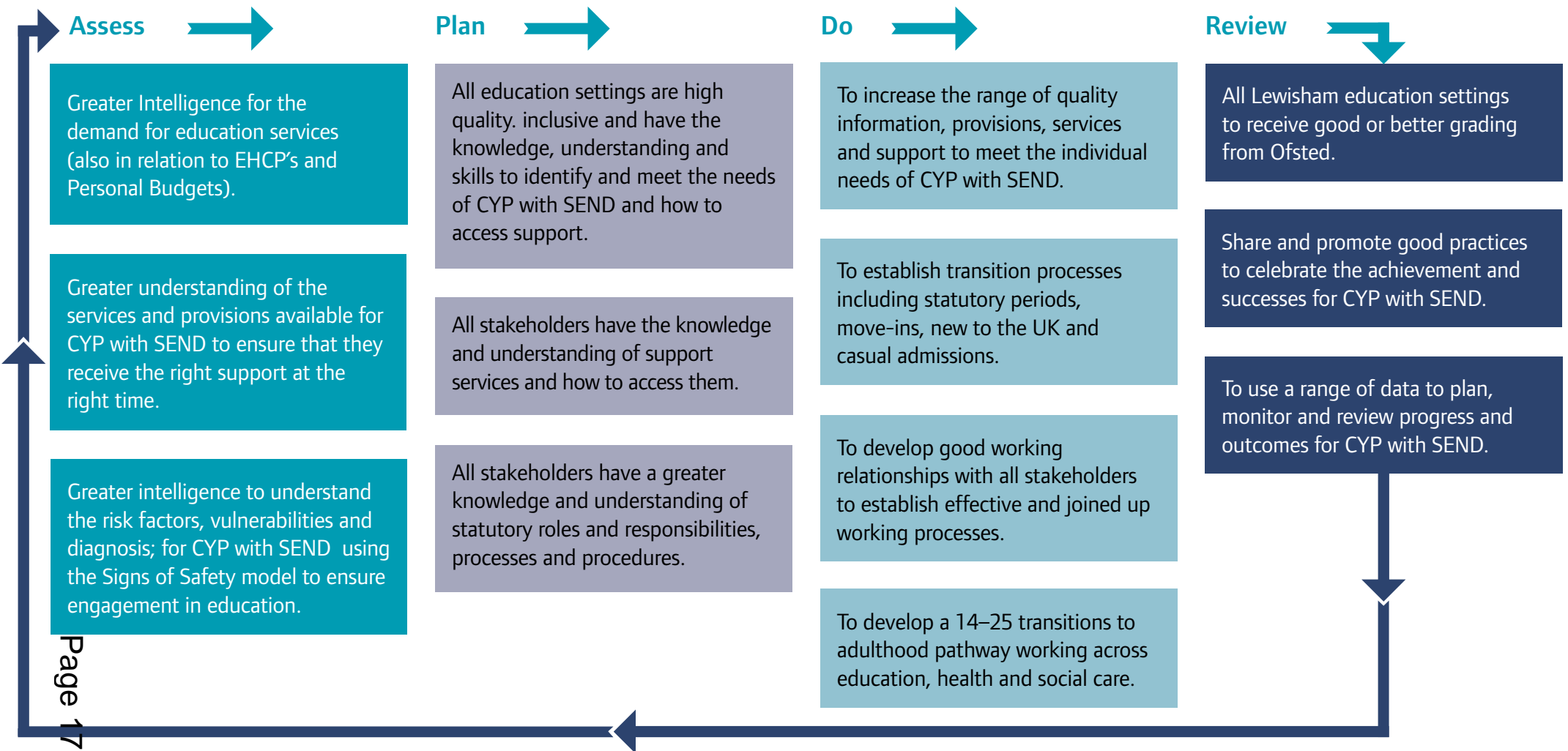
- 1 Informed and empowered
- 2 Prevention of needs escalating
- 3 Healthy and active
- 4 Socially and emotionally resilient
- 5 Raised achievement and attainment
- 6 Right support at the right time
- 7 Enabled independence and transition to adult life



We set out our objectives for education , health and social care under the assess, plan, do and review cycle striving to continually learn and work towards our partnerships enabling children and young people with SEND to meet their outcomes.

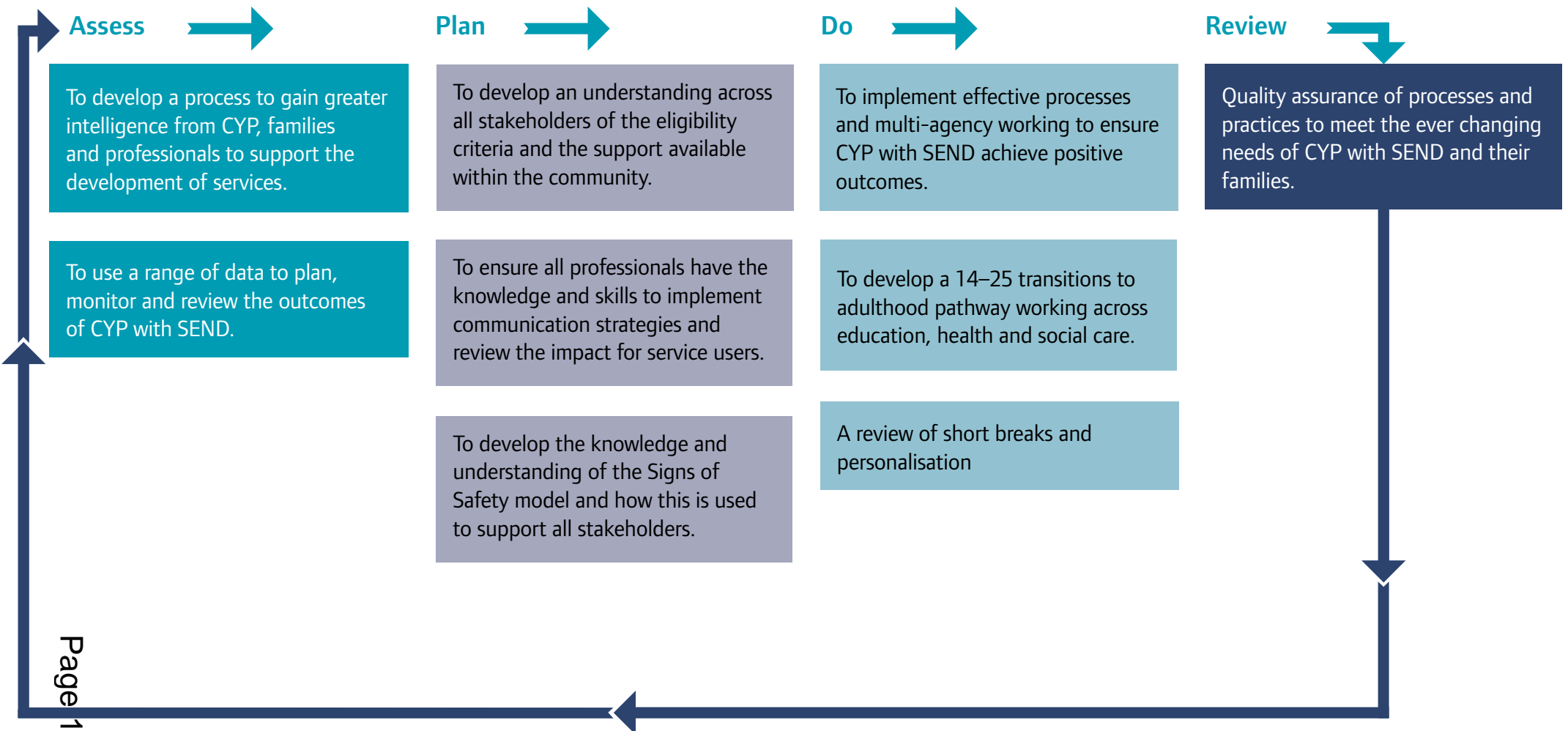
SEND Strategy 2020–2023 education objectives

The objectives will be worked towards using a continuous cycle of assess, plan, do and review as listed below.



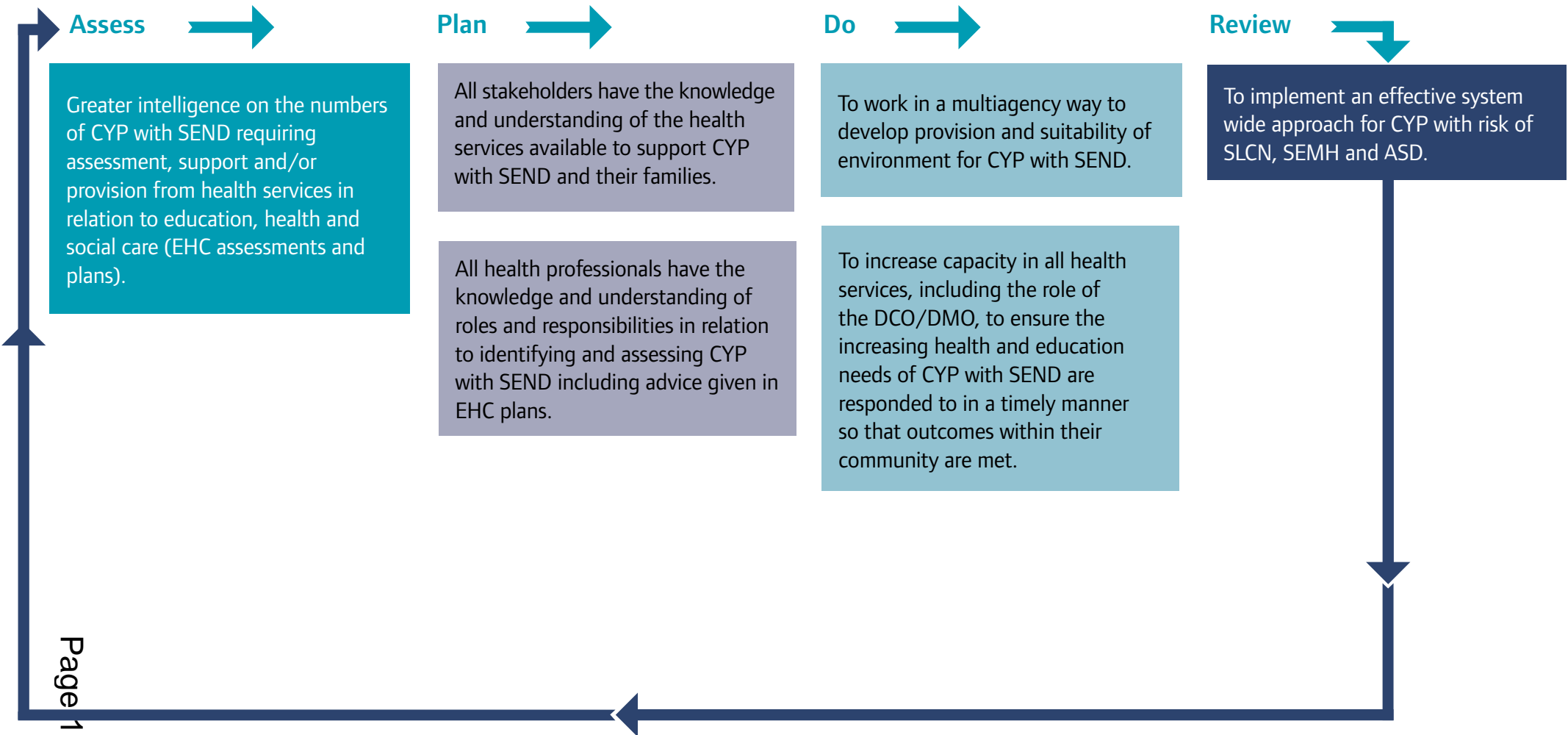
SEND Strategy 2020–2023 disability social care objectives

The objectives will be worked towards using a continuous cycle of access, plan, do and review as listed below.



SEND Strategy 2020–2023 health objectives

The objectives will be worked towards using a continuous cycle of assess, plan, do and review as listed below.



Our partnership areas of work



Our partnership local offer



Support for children and young people with special educational needs and/or disabilities

Visit our 'local offer' to find out about:

- health and wellbeing
- social care
- education and learning
- things to do and much more



This page is intentionally left blank